



Wednesdays, 12:00 PM

Location:
Proteomics, Rm. 120
Host: IQB



September 20
Sijian Wang, Ph.D.
Rutgers University
Precision Medicine in Diabetes



November 1
Angela Gronenborn, Ph.D.
University of Pittsburgh
The Awesome Power of Fluorine NMR – Ligand Binding, PREs and Other Applications

Location:
CABM, Rm. 010
Host: CABM



September 27
John Kozarich, Ph.D.
ActivX Biosciences, Inc.
Chemoproteomic Profiling of ATPases for Drug Discovery and Development



November 8
David Perlin, Ph.D.
Public Health Research Institute - Rutgers New Jersey Medical School
Factors Promoting Multidrug Resistance in Pathogenic Fungi

Location:
CABM, Rm. 010
Host: IQB and CABM



October 4
Ivan V. Korendovych, Ph.D.
Syracuse University
De Novo Design of Catalysts



November 15
Tirthakar Dasgupta, Ph.D.
Rutgers University
Handling Complex Experiments with Multiple Interventions: Methods and examples



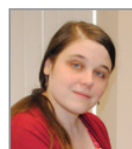
October 11
Ileana Streinu, Ph.D.
Smith College
Large Scale Rigidity-based Flexibility Analysis of Biomolecules



November 29
Predrag Radivojac, Ph.D.
Harvard Medical School
Large Scale Prediction of Protein 3D Structures from Evolutionary Couplings



October 18
Davide Comoletti, D.V.M., Ph.D.
Rutgers - Robert Wood Johnson Medical School
Identification and Structural Characterization of IgLONs, a Family of Synaptic Adhesion Proteins



December 6
Siobain Duffy, Ph.D.
Rutgers University
Single-Stranded DNA Viruses: Emergent Pathogens with Biased Molecular Evolution



October 25
Philip Bryan, Ph.D.
University of Maryland
Engineering Proteins That Switch Fold and Function: Smart proteins from A to Y



December 13
Subhajyoti De, Ph.D.
Rutgers Cancer Institute of New Jersey
Dissecting Patterns of Cancer Genome Evolution

More information:

iqb.rutgers.edu/seminars

Series Chair: Stephen K. Burley



Institute for Quantitative Biomedicine (IQB)
Rutgers, The State University of New Jersey
174 Frelinghuysen Rd., Piscataway, NJ 08854-8076
Contact: Michelle Sanghera
Phone: 848-445-8102 • msanghera@iqb.rutgers.edu



Center for Advanced Biotechnology and Medicine (CABM)
Rutgers, The State University of New Jersey
679 Hoes Lane, Piscataway, NJ 08854-8021
Contact: Darlene Bondoc
Phone: 732-235-5310 • bondoc@cabm.rutgers.edu