

RUTGERS

CRASH COURSE:

Engineering Immune Cells to Fight Cancer

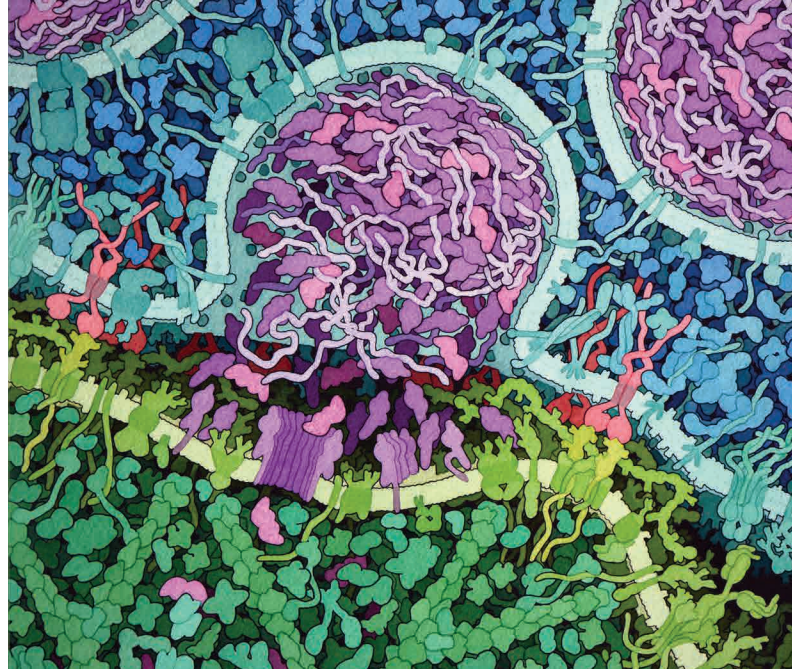


Illustration by David Goodsell. Engineered T cell recognizing and attacking a leukemia cell. More information at pdb101.rcsb.org/motm/214

Co-Organized by:

Rutgers Institute for Quantitative Biomedicine (IQB)
Rutgers Cancer Institute of New Jersey (CINJ)

Registration

Participation is free but space is limited. Register at iqb.rutgers.edu/crashcourses

Parking

Parking available in Lots A and B
679 Hoes Lane West,
Piscataway, NJ 08854.

Visitors must register their vehicle prior to parking on campus. Details at iqb.rutgers.edu/crashcourses.

Proteomics Building Address

174 Frelinghuysen Rd
Piscataway, NJ 08854

Questions

Contact Michelle Sanghera
msanghera@iqb.rutgers.edu



iqb.rutgers.edu

Tuesday, October 29 | 1:00 PM – 6:00 PM

Proteomics Building • Room 120 • Busch Campus

Program

Co-Chairs: Stephen K. Burley and Edmund C. Lattime

- | | |
|--------------|--|
| 1:00–1:15 pm | <i>IQB Welcome</i>
Stephen K. Burley, M.D., D.Phil. - IQB, C&CB, CINJ |
| | <i>CINJ Welcome</i>
Eileen White, Ph.D. – CINJ |
| 1:15–1:45 pm | <i>Immuno-oncology Paradigm/Crash Course Objectives</i>
Edmund C. Lattime, Ph.D. – CINJ |
| 1:45–2:15 pm | <i>Structural Biology of the T cell Surface</i>
Stephen K. Burley, M.D., D.Phil. – RCSB Protein Data Bank |
| 2:15–3:00 pm | <i>A Biologics Platform for Clonal-selective T cell Modulation</i>
Steven C. Almo, Ph.D. – Albert Einstein College of Medicine |
| 3:00–3:30 pm | <i>Group Photo (outside building weather permitting)</i>
<i>Coffee/Tea/Networking</i> |
| 3:30–4:15 pm | <i>Interaction Kinetics and Transcriptomic Responses with CD19 CAR NK Cell Therapy in Lymphoma</i>
Andrew M. Evens, D.O., M.Sc. – CINJ |
| 4:15–5:00 pm | <i>Kymriah: Past, Present, and Future</i>
Randi E. Isaacs, M.D. – Novartis Institutes for Biomedical Research |
| 5:00–5:10 pm | <i>Acknowledgments/Closing Remarks</i>
Stephen K. Burley, M.D., D.Phil. – IQB, C&CB, CINJ |
| 5:10–6:00 pm | <i>Networking reception</i> |